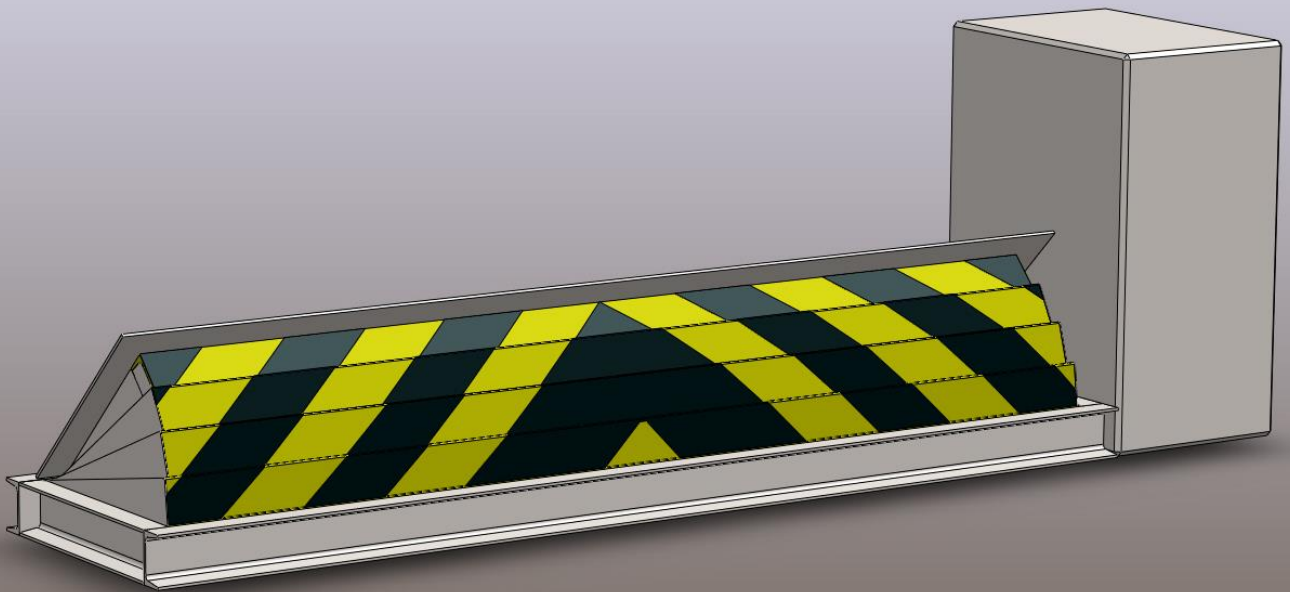


ELECTROMECHANICAL ROAD BLOCKER/ MODEL GUARD



Technical information (standard price include):

- ✓ Small Flat Covered Road blocker (100mm construction height)
- ✓ Control cabinet with microprocessor and mechanical drive integrated on blocker
- ✓ Control panel (UP/DOWN/E-STOP) with 1.5m wire
- ✓ Operating temperature -40°C to +60°C
- ✓ Power connection - 1x230VAC or 3x400VAC 50Hz
- ✓ Standard 8t axis load (optional more)
- ✓ Standard raising and lowering time 4-5 second
- ✓ Blocking height is 350mm - 550mm



File ver. 5, revised 25.01.2018

ELECTROMECHANICAL ROAD BLOCKER/ MODEL GUARD

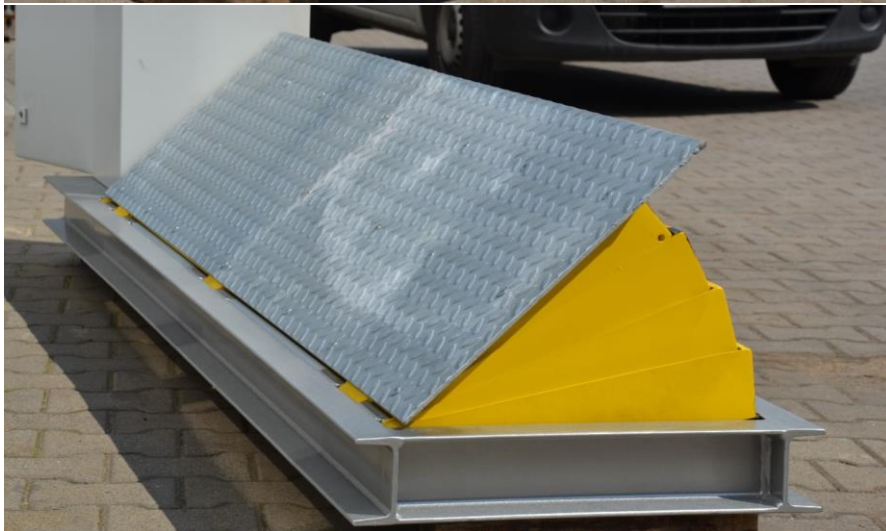


Technical information (optional equipment):

- ✓ UPS supply for no-power emergency operations (+1300 Euro)
- ✓ Separate traffic post with LED RED/GREEN light (+280 Euro)
- ✓ Additional basic guardian panel (+230 Euro)
- ✓ Communication modules for alarm and integrated secure systems
- ✓ Individual automatic applications (loops, photocells, integrate with gates, barriers etc.)

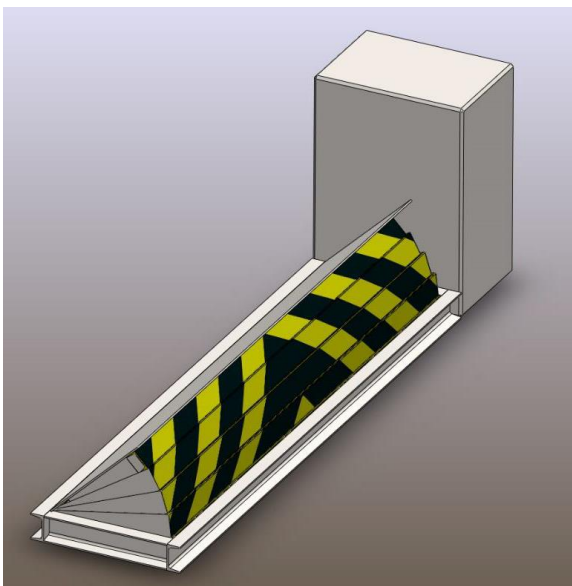
ELECTROMECHANICAL ROAD BLOCKER

MODEL GUARD



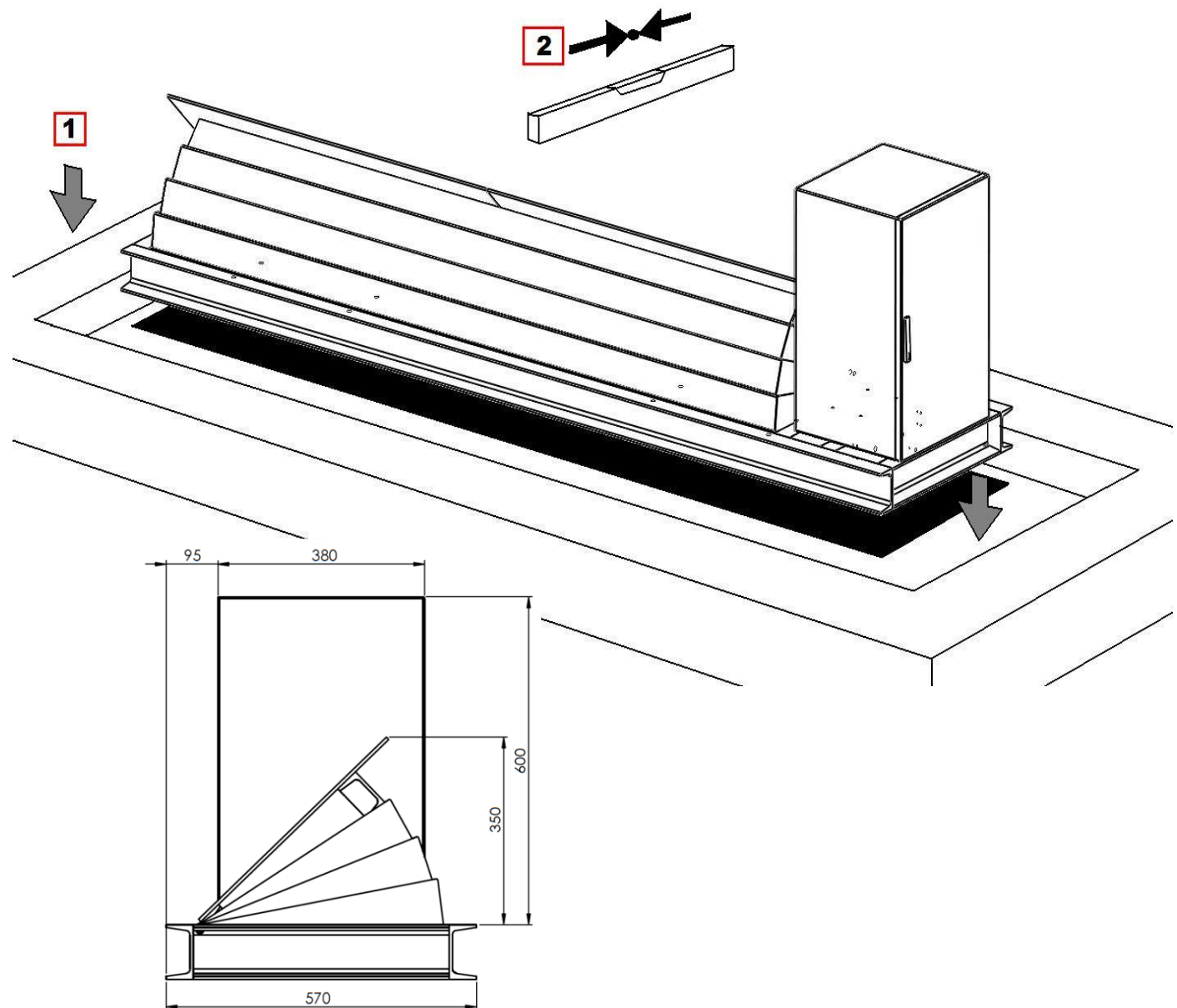
ELECTROMECHANICAL ROAD BLOCKER

MODEL GUARD



ELECTROMECHANICAL ROAD BLOCKER

MODEL GUARD



ELECTROMECHANICAL ROAD BLOCKER

MODEL GUARD - OPTIONAL EQUIPMENT



→ Pushbutton desktop panel ALUMINIUM



→ Loop Detector



→ Proximity Card Reader



→ Pushbutton Desktop panel PCV



→ Key switch + emergency stop



→ LED traffic post



→ Sound Warning Horn



→ LED traffic light on separate post



→ Remote Control



→ Rotating warning beacon

ELECTROMECHANICAL ROAD BLOCKER

MODEL GUARD - OPTIONAL EQUIPMENT



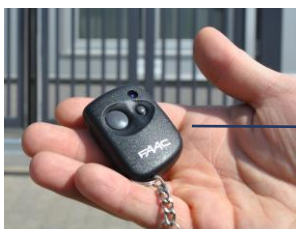
Pushbutton desktop panel ALUMINIUM



Pushbutton desktop panel PCV



Key switch operations



Remote control 2 or 4 channel