

## ROAD BLOCKER / MODEL MONOBLOCK



### Technical information:

Installation type:	Underground
Structure type:	Solid steel construction fully hot dip galvanized acc to ISO EN 1461
Width of blocked space:	400 mm
Height of raised obstacle:	600 mm
PLC (Programmable Logic Controller) type:	MITSUBISHI PLC located in external cabinet (service worldwide)
PLC (Programmable Logic Controller) location:	In external cabinet located up to 7 meter away from road blocker
Electro-hydraulic drive unit:	In external cabinet up to 7 meter away from road blocker. A lockable weather resistant enclosure/cabinet is provided for the HPU. The design provides easy access to HPU for maintenance and emergency operations of the hydraulic system. Enclosure is provided in the corrosion resistant coating.



File ver. 5, revised 25.01.2018

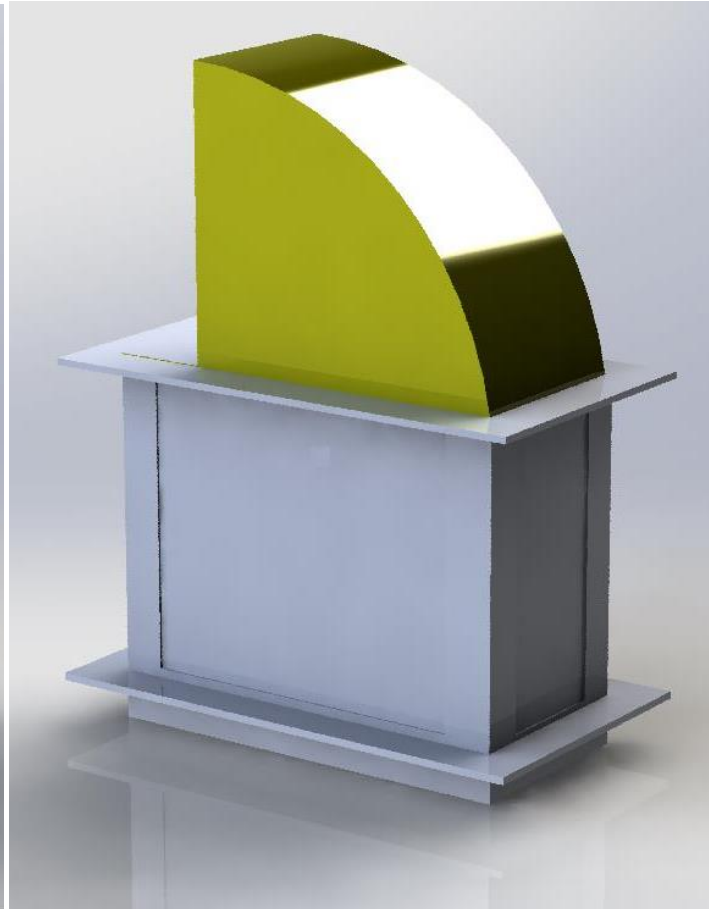
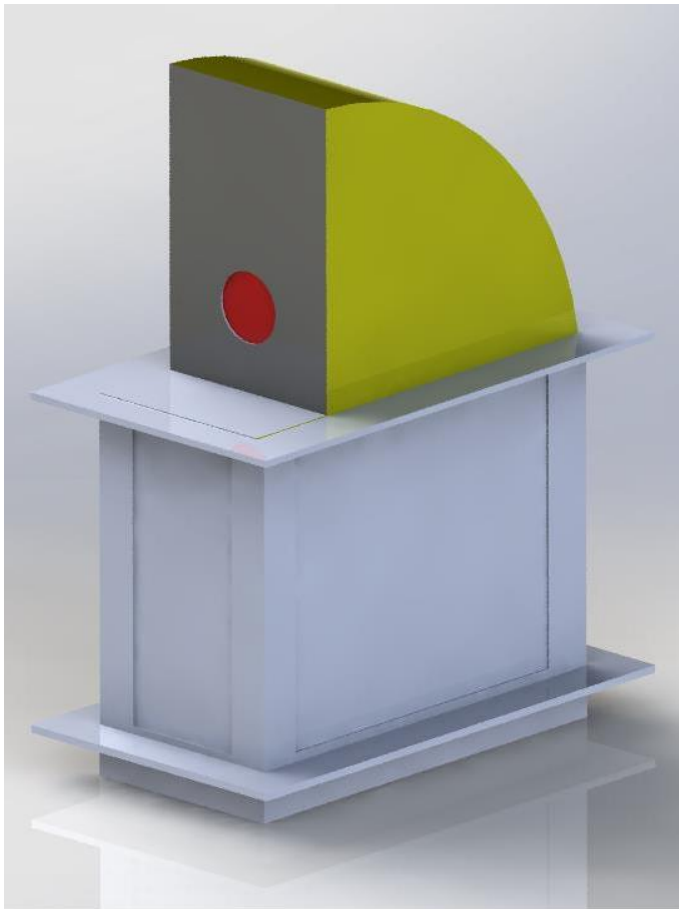
## ROAD BLOCKER

### MODEL MONOBLOCK

Axis load:	Standard 11,5 tones
Operation temperature:	From -40 to +60 degree Celsius (higher temperatures available on request, please contact our sales department)
Top Cover:	Made of 6 anti sliperry checker plates hot dib galvanized acc. ISO EN 1461
Standard equipment (included in the basic set):	<ul style="list-style-type: none"><li>- Pushbutton box control panel (OPEN /STOP/ EMERGENCY STOP / CLOSE)</li><li>- Hydraulic Manual Emergency Pump (Manual operation in case of power supply failure, allows to raise and lower the road blockers in case of power failure)</li><li>- 1 pcs warning lights included in the emobile obstacle</li><li>- 9 m long Hydraulic hose and electric wires</li><li>- 2 channel loops detector</li></ul>
Emergency manual opening:	By integrated hydraulic Manual Emergency Pump
Corrosion protection:	All steel elements hot dib galvanized, mobile obstacle powder painted to YELLOW colour
Control devices:	Pushbutton in the guard booth (OPEN /STOP/ EMERGENCY STOP / CLOSE)
Opening time:	Approx. 4-6 seconds
Emergency manual opening:	By integrated hydraulic pump
Safety light:	1 pcs safety lights integrated in moving elements
Corrosion protection:	All steel elements hot dib galvanized acc. ISO EN 1461, moving element painted yellow
External cabinet system protection grade:	IP 55
Power supply:	3x400VAC 50Hz
Warranty:	24 months

## ROAD BLOCKER

### MODEL MONOBLOCK



### STANDARD EQUIPMENT:



→ CONTROL CONSOLE

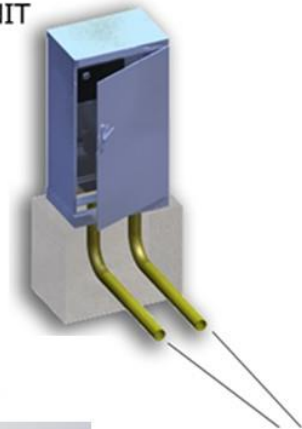


→ LOOP DETECTOR

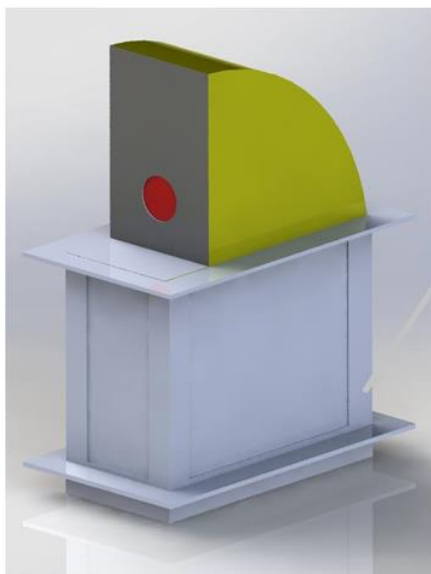
## ROAD BLOCKER

### MODEL MONOBLOCK – ELEMENTS OF SYSTEM

OUTSIDE CABINET WITH CONTROL BOX AND DRIVE UNIT



ROAD BLOCKER



for cables and hydraulic hoses

The system consist of:

- ✓ **Road Blocker**  
which absorbs the impact
- ✓ **Outside Cabinet**  
with Control Box with drive unit which is to be placed up to 7 meter form the Road Blocker

Both elements of the system are connected with 9 metres long electrical cables and 9m long hydraulic hoses, which have to be place into the ground in round connection pipes during mechanical installation.

## ROAD BLOCKER

### MODEL MONOBLOCK – EXTERNAL CABINET WITH DRIVE UNIT & CONTROL UNIT



**External Cabinet IP55**



**Internal Cabinet IP66**



**Internal Cabinet IP66**



**HPU**

# ROAD BLOCKER

## MODEL MONOBLOCK – OPTIONAL EQUIPMENT



Control console



Safety Photocells



Proximity Card Reader



LED traffic post



Hydraulic Accumulator for Emergency Fast Operations



LED traffic light on separate post